



2020 Roadway Rehabilitation Project Week of May 25-30

All schedules are weather permitting.

Phasing map available on following page.

Phase 1

Horseshoe Lane

- Final driveway patching will occur. After barricades are removed from your driveway, please park in your driveway until construction is complete.
- Road grading will begin. No parking is allowed on Horseshoe Lane between 7:00 a.m. and 7:00 p.m.
- Topsoil placement and grading will occur.
- Bituminous paving is scheduled for May 29.

Aldrich Trail/Lori Lane

- The removal of pavement will occur mid-week. After barricades are removed from your driveway, please park in your driveway until construction is complete. No parking is allowed on the street between 7:00 a.m. and 7:00 p.m.
- Bituminous paving is scheduled for May 29.

Phase 3

- Utility work will continue. All affected residents have received notices.

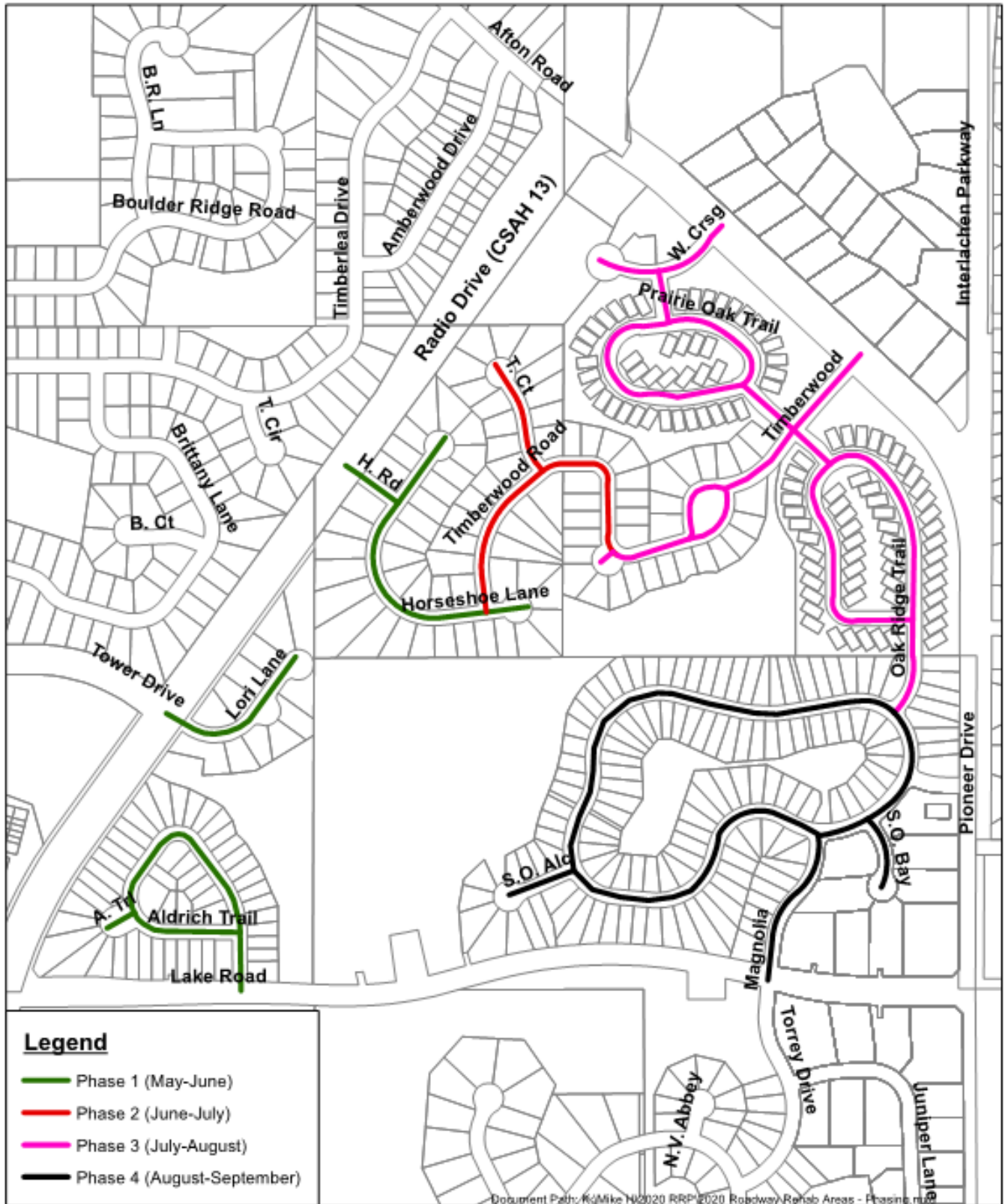
Phase 4

- Utility work will continue. All affected residents have received notices.

Questions?

Questions can be directed to the project hotline at (612) 430-2805. For more information visit the project website at [woodburymn.gov/RoadRehab2020]

Phasing Map



8301 Valley Creek Road • Woodbury, Minnesota 55125-3330
 (651)714-3593 • TDD (651)714-3568 • FAX (651)714-3501

